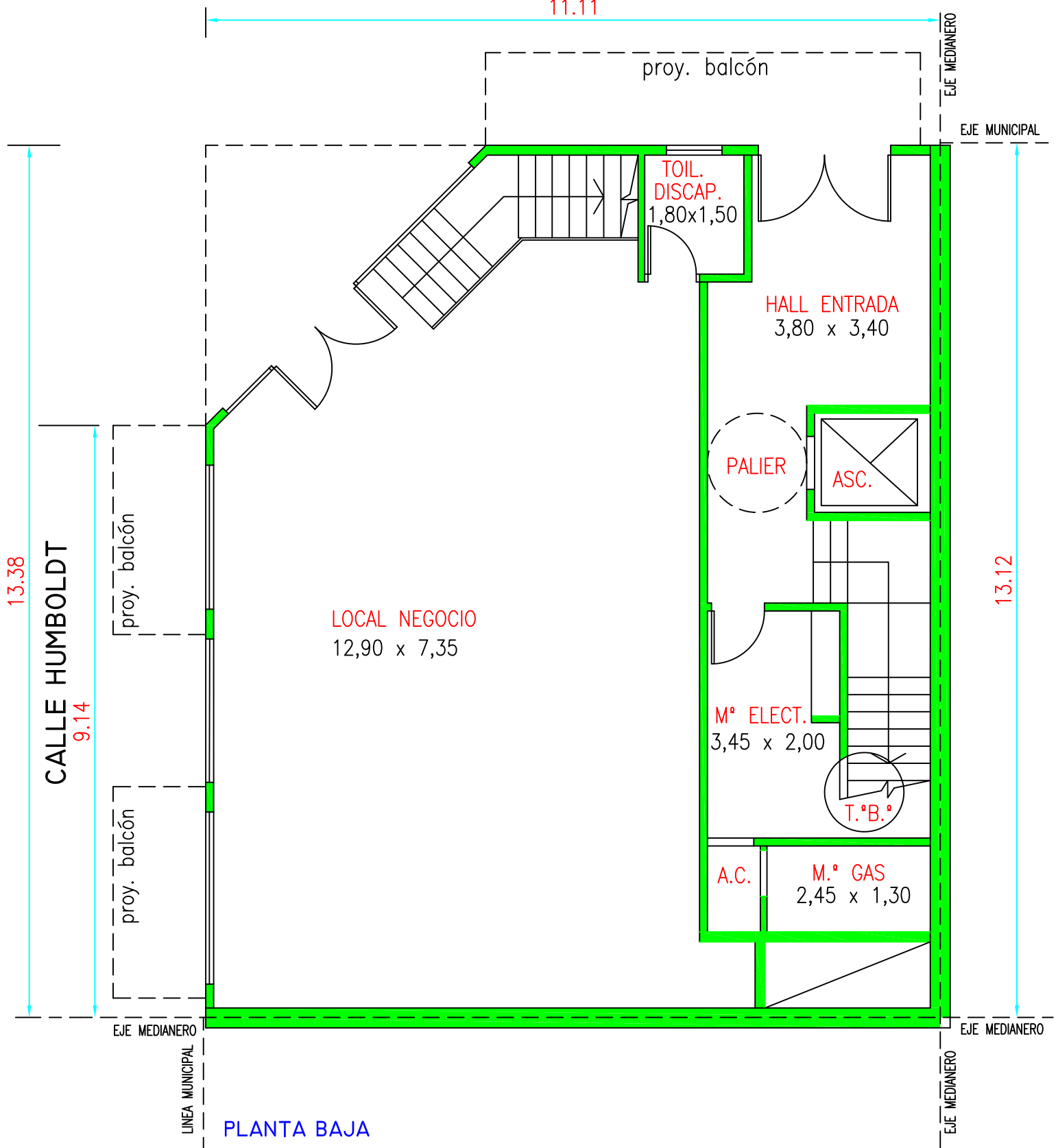


HUMBOLDT 2402



CALLE CHARCAS

11.11



13.38

CALLE HUMBOLDT
9.14

proy. balcón

proy. balcón

LOCAL NEGOCIO
12,90 x 7,35

proy. balcón

TOIL.
DISCAP.
1,80x1,50

HALL ENTRADA
3,80 x 3,40

PALIER

ASC.

M.º ELECT.
3,45 x 2,00

T.ºB.º

A.C.

M.º GAS
2,45 x 1,30

13.12

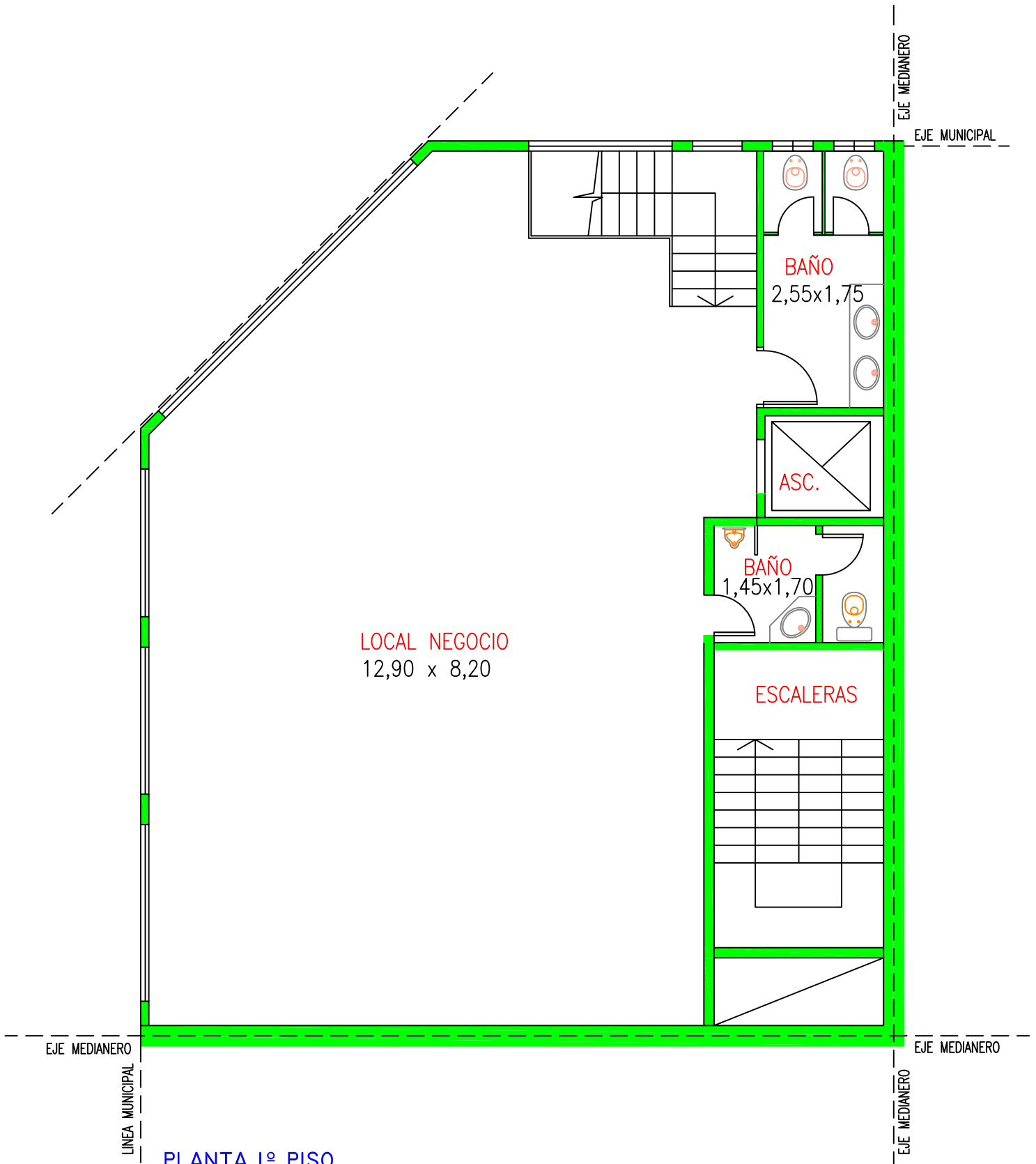
EJE MEDIANERO

LINEA MUNICIPAL

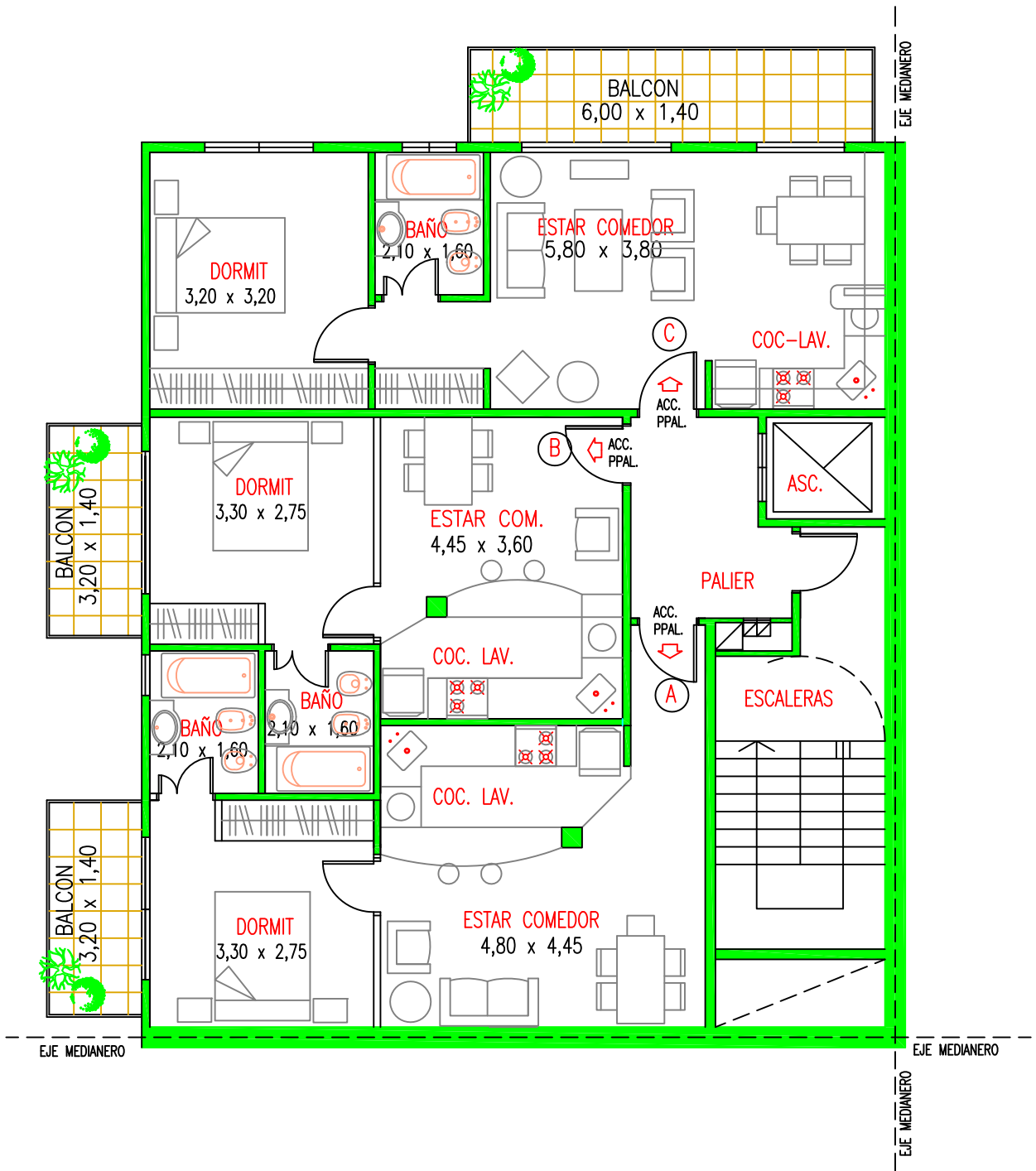
EJE MEDIANERO

EJE MEDIANERO

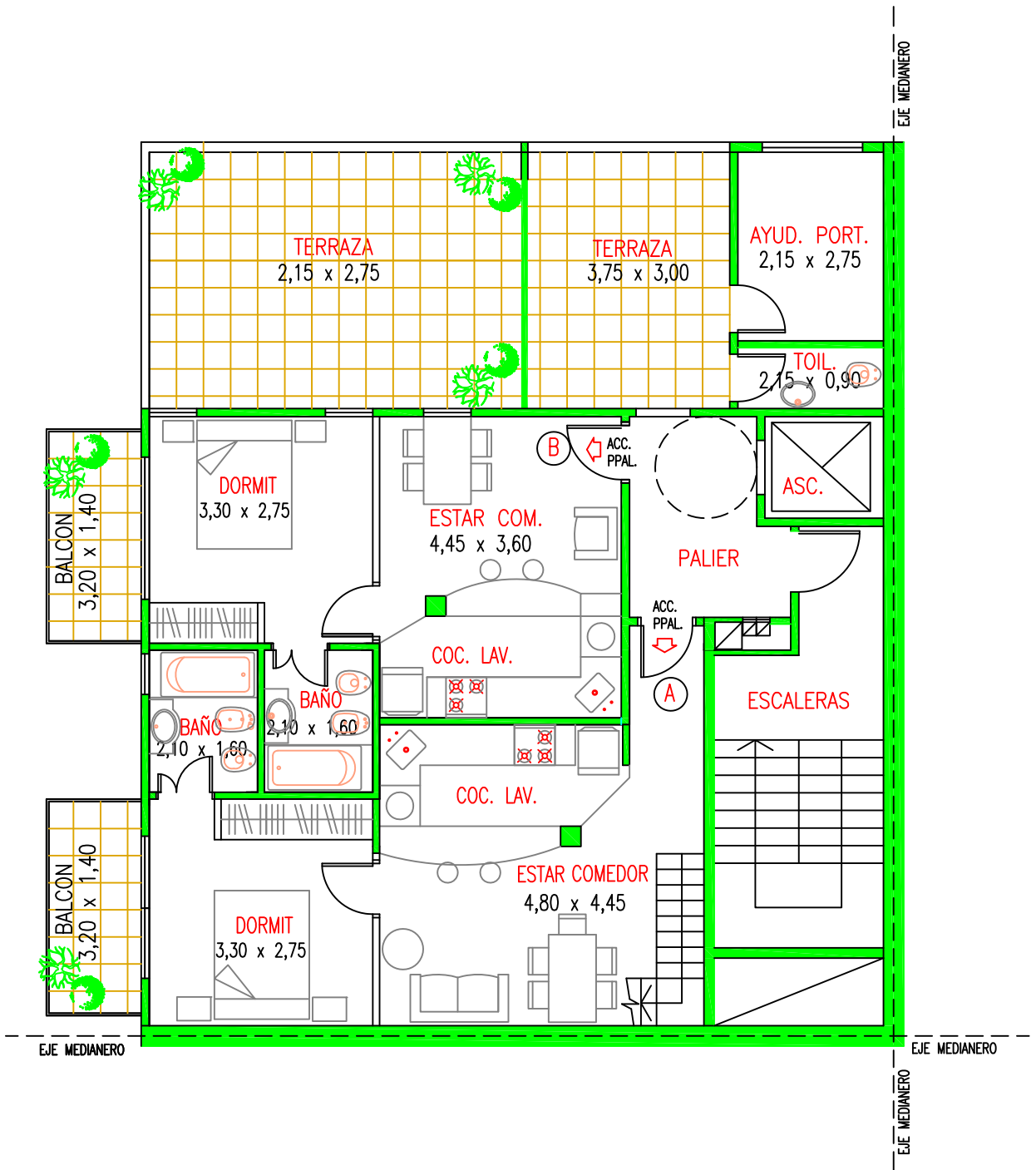
PLANTA BAJA
HUMBOLDT 2402



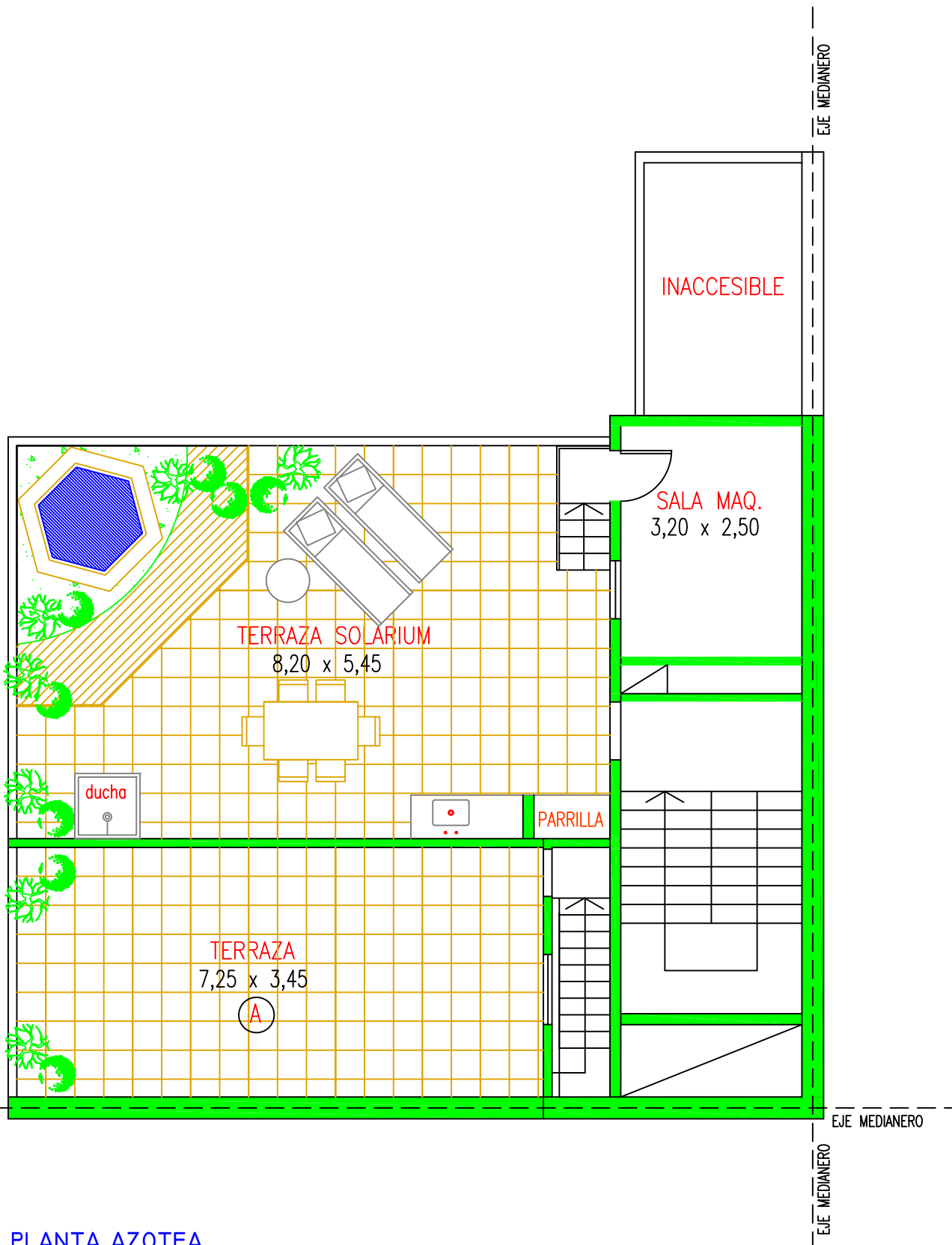
PLANTA 1º PISO
HUMBOLDT 2402



PLANTA TIPO 2º Y 3º PISO
HUMBOLDT 2402



PLANTA 4º PISO
HUMBOLDT 2402



PLANTA AZOTEA
HUMBOLDT 2402